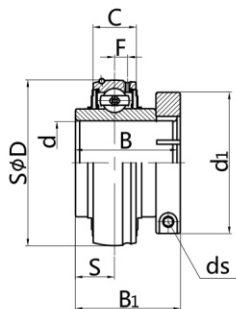
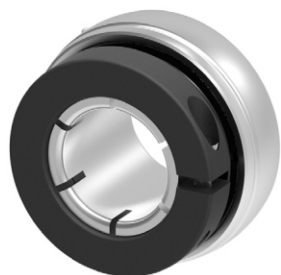


FJ-NC2



Bearing NO.	Dimensions (mm / in.)									Dynamic load ratings(N)	Static load ratings(N)	Weight (kg)
	d	d1	D	B	B1	C	S	ds	F			
FJ-NC204	20	44.5	47	31.0	33.4	17	12.7	M4X0.7	4.3	12800	6600	0.30
204-12	3/4	1.752	1.850	1.221	1.315	0.669	0.500	8-32UNC	0.169			
FJ-NC205	25	49.2	52	34.1	36.5	17	14.3	M4X0.7	4.3	14000	7850	0.40
205-13	13/16	1.937	2.047	1.343	1.437	0.669	0.563	8-32UNC	0.169			
205-14	7/8											
205-15	15/16											
205-16	1											
FJ-NC206	30	55.6	62	38.1	39.7	19	15.9	M4X0.7	5.2	19450	11250	0.50
206-17	1-1/16	2.189	2.441	1.500	1.563	0.748	0.626	8-32UNC	0.205			
206-18	1-1/8											
206-19	1-3/16											
206-20	1-1/4											
FJ-NC207	35	65.1	72	42.9	44.5	20	17.5	M5X0.8	5.7	25700	15200	0.80
207-20	1-1/4	2.437	2.835	1.689	1.752	0.787	0.689	10-24UNC	0.224			
207-22	1-3/8	2.563										
207-23	1-7/16											
FJ-NC208	40	68.3	80	49.2	50.8	21	19.0	M5X0.8	6.2	29500	18100	1.00
208-24	1-1/2	2.689	3.150	1.937	2.000	0.827	0.748	10-24UNC	0.244			
FJ-NC209	45	74.6	85	49.2	50.8	22	19.0	M5X0.8	6.6	32700	20900	1.10
209-26	1-5/8	2.811	3.347	1.937	2.000	0.866	0.748	10-24UNC	0.26			
209-27	1-11/16	2.937										
209-28	1-3/4											
FJ-NC210	50	85.7	90	51.6	53.1	24	19.0	M6X1	6.5	35000	23200	1.40
210-31	1-15/16	3.374	3.543	2.031	2.091	0.945	0.748	1/4-20UNC	0.2559			
210-32	2											
FJ-NC211	55	92.1	100	55.6	57.1	25	22.2	M6X1	7.1	43500	29200	1.50
211-32	2	3.500	3.937	2.189	2.248	0.984	0.874	1/4-20UNC	0.28			
211-35	2-3/16	3.626										
FJ-NC212	55	104.8	110	65.1	66.7	27	25.4	M8X1.25	7.9	47700	32900	2.20
212-36	2-1/4	4.063	4.331	2.563	2.626	1.063	1.000	5/16-18UNC	0.311			
212-39	2-7/16	4.126										