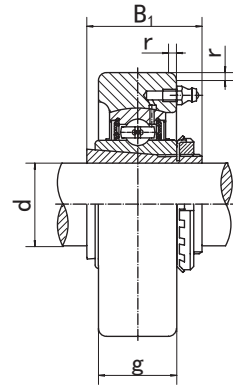
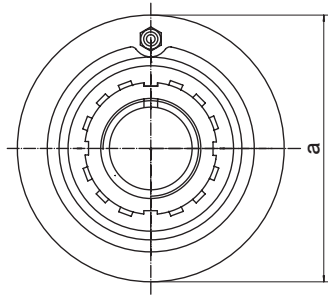


UKC2 (Normal-duty)

Cartridge Units
(with adapter mounted)



Unit NO.	Dimensions (mm / in.)					Bearing No.	Housing No.	Weight (kg)
	d	a	g	r	B ₁			
UKC205;H2305 205;HE2305	20 3/4	80 3.1496	22 55/64	2 0.079	35 1.378	UK205;H2305 UK205;HE2305	C205	0.68
UKC206;H2306 206;HS2306 206;HE2306	25 7/8 1	85 3.3465	27 1-1/16	2 0.079	38 1.496	UK206;H2306 UK206;HS2306 UK206;HE2306	C206	0.85
UKC207;H2307 207;HS2307	30 1-1/8	90 3.5433	28 1-7/64	2 0.079	43 1.693	UK207;H2307 UK207;HS2307	C207	0.95
UKC208;H2308 208;HE2308 208;HS2308	35 1-1/4 1-3/8	100 3.937	30 1-3/16	2.5 0.098	46 1.811	UK208;H2308 UK208;HE2308 UK208;HS2308	C208	1.25
UKC209;H2309 209;HA2309 209;HE2309 209;HS2309	40 1-7/16 1-1/2 1-5/8	110 4.3307	31 1-7/32	2.5 0.098	50 1.969	UK209;H2309 UK209;HA2309 UK209;HE2309 UK209;HS2309	C209	1.58
UKC210;H2310 210;HS2310 210;HA2310 210;HE2310	45 1-5/8 1-11/16 1-3/4	120 4.7244	33 1-19/64	2.5 0.098	55 2.165	UK210;H2310 UK210;HS2310 UK210;HA2310 UK210;HE2310	C210	2.03
UKC211;H2311 211;HS2311 211;HA2311 211;HE2311	50 1-7/8 1-15/16 2	125 4.9213	35 1-3/8	2.5 0.098	59 2.323	UK211;H2311 UK211;HS2311 UK211;HA2311 UK211;HE2311	C211	2.21
UKC212;H2312 212;HS2312	55 2-1/8	130 5.1181	38 1-1/2	2.5 0.098	62 2.441	UK212;H2312 UK212;HS2312	C212	2.44
UKC213;H2313 213;HA2313 213;HE2313 213;HS2313	60 2-3/16 2-1/4 2-3/8	140 5.5118	40 1-37/64	3 0.118	65 2.559	UK213;H2313 UK213;HA2313 UK213;HE2313 UK213;HS2313	C213	2.91